

PacketStorm6XG

IP Network Emulator

“Providing the Internet in a box”



Features and Description:

The PacketStorm IP Network Emulators reproduce the unfavorable conditions of IP Networks and WANs in a controllable and repeatable lab setting. The emulator recreates the dynamic behavior of the Internet such that any network model can be reproduced including those models that change with traffic, time, or the behavior of another traffic flow.

PacketStorm6XG

- Line Rate Performance
- Three Slots with up to 6 Ports
- Ethernet Interfaces: 1 Gbps & 10 Gbps

Video Applications:

The PacketStorm6XG addresses the following video applications such as: FEC Aware Matrices, Hitless / Seamless Protection Switching, Active Video, SMPTE 2022 1/2 and 5/6.

Impairments:

- Delay
- Jitter
- Drop
- Decimate
- Duplicate
- Re-order
- Throttle
- Burst Drop
- Bit Error
- RTP Sequence Drop
- FEC Aware
- Active Video
- Low Latency

Modifiers:

- Source Address
- Destination Address
- DSCP
- TTL
- Protocol
- Source Port
- Destination Port
- VLAN
- MAC
- IPv6

Filters:

- Source & Destination Address
- Source & Destination Port
- Protocol
- MPLS
- VLAN
- MAC
- Universal
- Bit Pattern
- IPv6
- RTP
- FEC Aware
- Active Video
- All Frames

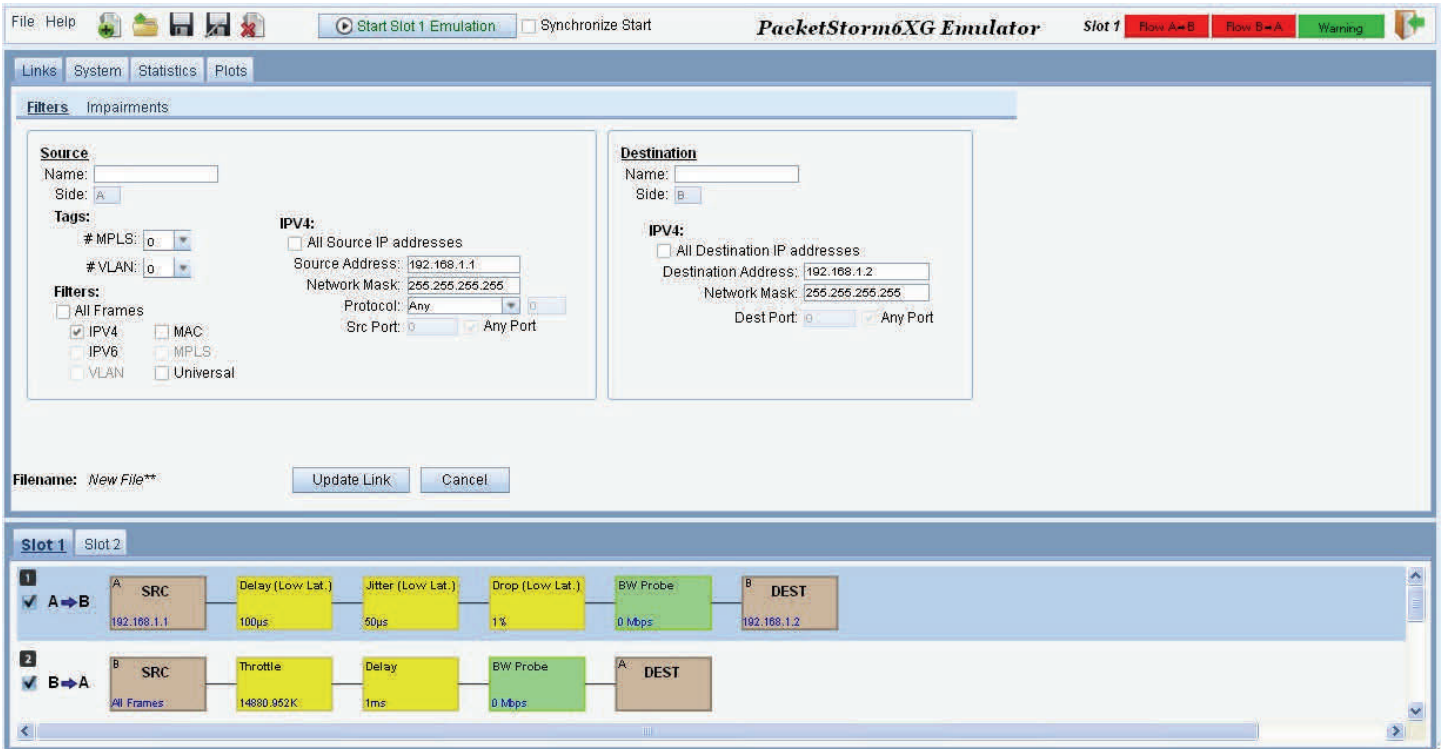
Statistics:

- Bandwidth
- Delay
- Loss
- Bytes
- Packets



Graphical User Interface

The PacketStorm6XG uses tabs and two sections to simplify the Graphical User Interface (GUI) and be able to make network models easily. The top section displays the different tabs and parameter settings. The bottom section displays the present network model and its settings.



Statistics

When emulation is started, the PacketStorm6XG automatically changes the top section to the Statistics Tab. In addition, to the various statistics displayed, the Statistics Tab contains the control and status of the Hitless feature for video applications.

