

Greenbone Security Manager

x-ray your network



The **Greenbone Security Manager (GSM)** is a Vulnerability Management Solution that seamlessly and transparently integrates into your security and GRC strategy, providing Vulnerability Assessment, Vulnerability Intelligence and Threat Management capabilities in the form of a dedicated virtual appliance. Identifying breaches of corporate security policy and regulations is covered as well.

With a strong focus on 3rd Party integration and open standards, the GSM is a best of breed security solution that enhances and supplements security posture and allows a proactive approach to automated Vulnerability Lifecycle Management.

The **GSM 600** controls sensors for up-to 12 security zones and covers up-to 6,000 IPs. The operational areas are medium to large enterprise IT and major branch offices.



Benefits

- Turn-key solution: operational within 10 minutes
- Powerful appliance operating system *Greenbone OS* with command line administration based on a comprehensive security design
- Integrates the *Greenbone Security Feed* with over 35,000 Network Vulnerability Tests, automatically updated daily with the newest threat detection routines
- Integrated Backup, Restore, Snapshot and Update
- Integrates *Greenbone Security Assistant* as central web interface
- No limitation on number of target IPs (effective number depends on scan pattern and scanned systems)
- Flat-rate subscription includes exchange of defect hardware, the *Greenbone Security Feed*, feature updates and support

Specifications



Dimensions

- 426mm x 450mm x 44mm

Certifications

- CE
- FCC Class A

Environment

- Operating temperature: 0° to 40°C (32° to 104°F)
- Storage temperature: -20° to 80°C (-4° to 176°F)
- Humidity: 10% to 90% (non-condensing)

Connectivity

- 6 Port GbE 10/100/1000 Base-TX (Copper)
- 2 Port GbE SFP (Copper or Fiber)
- 1 Port Serial Console RS-232

Construction

- 1U rack mount chassis, heavy-duty steel
- 16x2 character LCD display



16x2 LCD Display
- boot status
- maintenance status

Cisco compatible
console port

6 Port GbE
10/100/1000
Base-TX (Copper)

2 Port GbE SFP
(Copper or
Fiber)

Greenbone Security Manager

x-ray your network



Supported standards

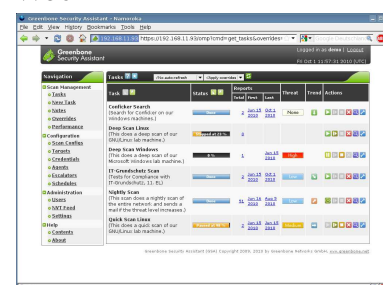
- Network integration: SMTP (Email), SNMP, SysLog, LDAP, NTP, DHCP, IPv4/IPv6
- Vulnerability detection: CVE, CPE, CVSS, OVAL
- Network scans: WMI, LDAP, HTTP, SMB, SSH, TCP, UDP, ...
- Policies: IT-Grundschutz, PCI-DSS, ISO 27001



Web-based interface (HTTPS)

- Scan tasks management with notes and false-positive marking
- Multi-user support
- Clustered and distributed scanning via master-slave mode
- Report browsing aided by filtering, sorting, annotating and risk scoring
- Plugin framework for reports: XML, PDF, ...
- Appliance performance overview

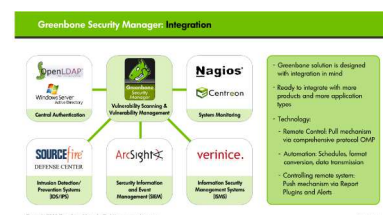
Web



Integration (API)

- OpenVAS Management Protocol (OMP), SSL-secured
- All user actions of web-based interface available via API
- Easy integration with other applications using the API
- Simple automation via command line tools (CLI)

API



Administrative console interface

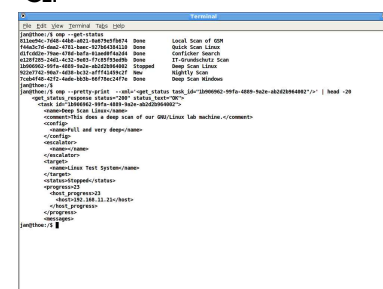
(available as shell via SSHv2 or RS232)

- Network integration configuration
- Backup, Restore, Snapshot, Factory Reset, Update

Scan applications (approved and customized versions)

- Scan Engine and Framework: OpenVAS with integrated *Greenbone Security Feed*
- Additional scan tools: Nmap, w3af

CLI



Neuer Graben 17
49074 Osnabrück
Germany

Telefon: +49-541-335084-0
Fax: +49-541-335084-99
Email: info@greenbone.net
Web: www.greenbone.net

Notes / Your Greenbone Security Solutions Partner:



Authorised Distributor
ComWorth Solutions Pte Ltd
Tel : +65 6748 2260 Fax : +65 67482267
Email : info@comworth.com.sg
Website : <http://www.comworth.com.sg>