

# Greenbone Security Manager

x-ray your network



The **Greenbone Security Manager (GSM)** is a Vulnerability Management Solution that seamlessly and transparently integrates into your Security and GRC strategy, providing Vulnerability Assessment, Vulnerability Intelligence and Threat Management capabilities in the form of a dedicated virtual appliance. Identifying breaches of corporate security policy and regulations is covered as well.

With a strong focus on 3rd Party integration and open standards, the GSM is a best of breed security solution that enhances and supplements security posture and allows a proactive approach to automated Vulnerability Lifecycle Management.

The **GSM 100** covers up-to 500 IPs. The operational areas are small to medium enterprise IT or medium branch offices.



## Benefits

- Turn-key solution: operational within 10 minutes
- Powerful appliance operating system *Greenbone OS* with command line administration based on a comprehensive security design
- Integrates the *Greenbone Security Feed* with over 30,000 Network Vulnerability Tests, automatically updated daily with the newest threat detection routines
- Integrated Update
- Integrates *Greenbone Security Assistant* as central web interface
- No limitation on number of target IPs (effective number depends on scan pattern and scanned systems)
- Flat-rate subscription includes exchange of defect hardware, the Greenbone Security Feed, feature updates and support

## Specifications



### Dimensions

- 370mm x 225mm x 44mm

### Certifications

- CE

### Environment

- Operating temperature:  
0° to 45°C (32° to 113°F)
- Storage temperature:  
-20° to 80°C (-4° to 176°F)
- Humidity: 10% to 90%  
(non-condensing)

### Connectivity

- 3 Port GbE  
10/100/1000 Base-TX (Copper)
- 1 Port Serial Console RS-232

### Construction

- Compact chassis, heavy-duty steel
- Rackmount kit optional



# Greenbone Security Manager

x-ray your network



## Supported standards

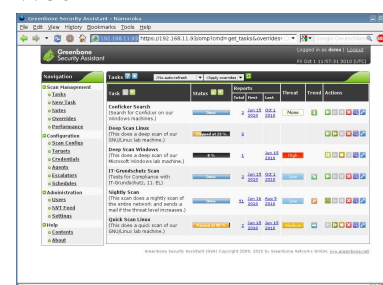
- Network integration: SMTP (Email), SNMP, SysLog, LDAP, NTP, DHCP, IPv4/IPv6
- Vulnerability detection: CVE, CPE, CVSS, OVAL
- Network scans: WMI, LDAP, HTTP, SMB, SSH, TCP, UDP, ...
- Policies: IT-Grundschutz, PCI-DSS, ISO 27001



## Web-based interface (HTTPS)

- Scan tasks management with notes and false-positive marking
- Multi-user support
- Clustered and distributed scanning via master-slave mode
- Report browsing aided by filtering, sorting, annotating and risk scoring
- Plugin framework for reports: XML, PDF, ...
- Appliance performance overview

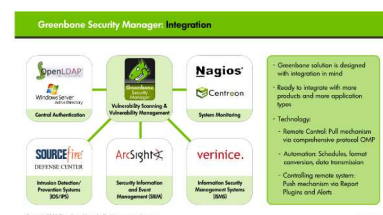
## Web



## Integration (API)

- OpenVAS Management Protocol (OMP), SSL-secured
- All user actions of web-based interface available via API
- Easy integration with other applications using the API
- Simple automation via command line tools (CLI)

## API



## Administrative console interface

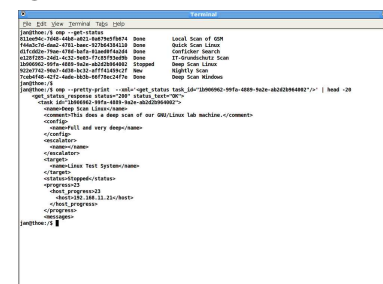
(available as shell via SSHv2 or RS232)

- Network integration configuration
- Backup, Restore, Snapshot, Factory Reset, Update

## Scan applications (approved and customized versions)

- Scan Engine and Framework: OpenVAS with integrated *Greenbone Security Feed*
- Additional scan tools: Nmap, w3af

## CLI



Neuer Graben 17  
49074 Osnabrück  
Germany

Telefon: +49-541-335084-0  
Fax: +49-541-335084-99  
Email: info@greenbone.net  
Web: www.greenbone.net

Notes / Your Greenbone Security Solutions Partner:



Authorised Distributor  
ComWorth Solutions Pte Ltd  
Tel : +65 6748 2260 Fax : +65 67482267  
Email : [info@comworth.com.sg](mailto:info@comworth.com.sg)  
Website : <http://www.comworth.com.sg>